



MPA Management

Francesco de Franco
Marine Protected Area Torre Guaceto



The background of the slide is a photograph of a coastal landscape. In the foreground, there is a body of water with a blue-green hue and visible ripples. In the middle ground, a low-lying coastline with some greenery is visible. On the left side of the coastline, there is a prominent stone fortification or tower with arched windows. The sky above is a clear, vibrant blue with a few scattered white clouds. Three large, semi-transparent orange circles are overlaid on the image, each containing text. The top circle is in the upper right, the bottom-left circle is in the lower left, and the bottom-right circle is in the lower right.

Management Consortium of Torre Guaceto

Municipalities of Carovigno, Brindisi and WWF Italy (NGO)

Institution of Terrestrial natural reserve

Ministerial Decree
2000
Extension of 1.100 ha

Overlapping with 1 SCI

IT9140005 Marine and terrestrial

And 1 SPA

IT9140008

T



t

Zoning



Zone A (Integral Reserve): Allowed research activities and guided tours

Zoning



Zone B (General reserve): Allowed research activities, guided tours and bathing

Zoning



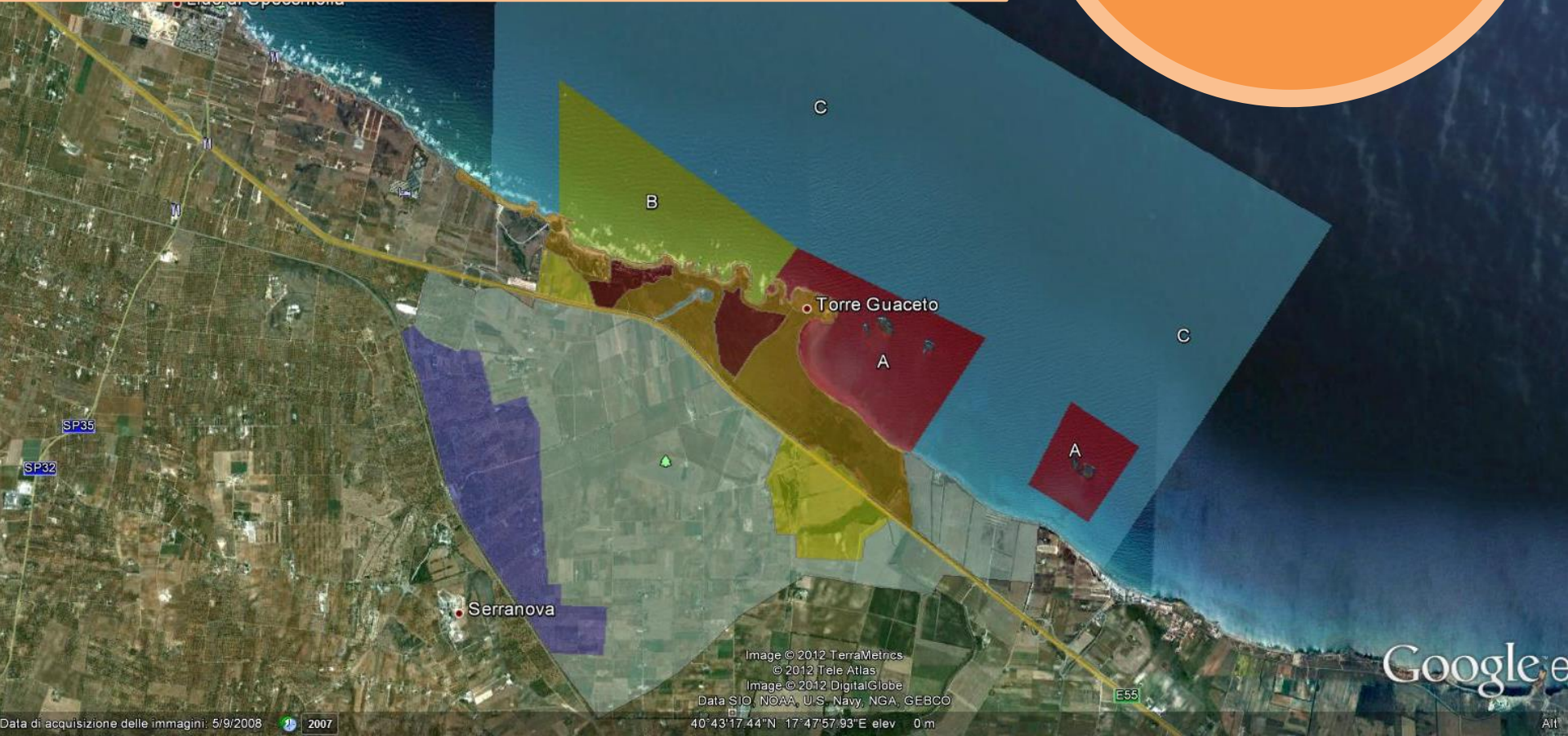
Zone C (Partial Reserve): Allowed research activities, guided tours, bathing and artisanal and recreative fishing





Zoning

Coastal territorial areas of the maritime domain





MANAGEMENT EFFECTIVENESS

In the SPAMI List



Organization registered
according EMASIII Reg.



Fishery management

In the first five years of management (2000-2005) the **fishing was forbidden** to allow the **regeneration** of fish stocks

Fishery management



The agreement allows the modification of fishing management according with the results of the monitoring activities on fishing stocks



Fishery regulation



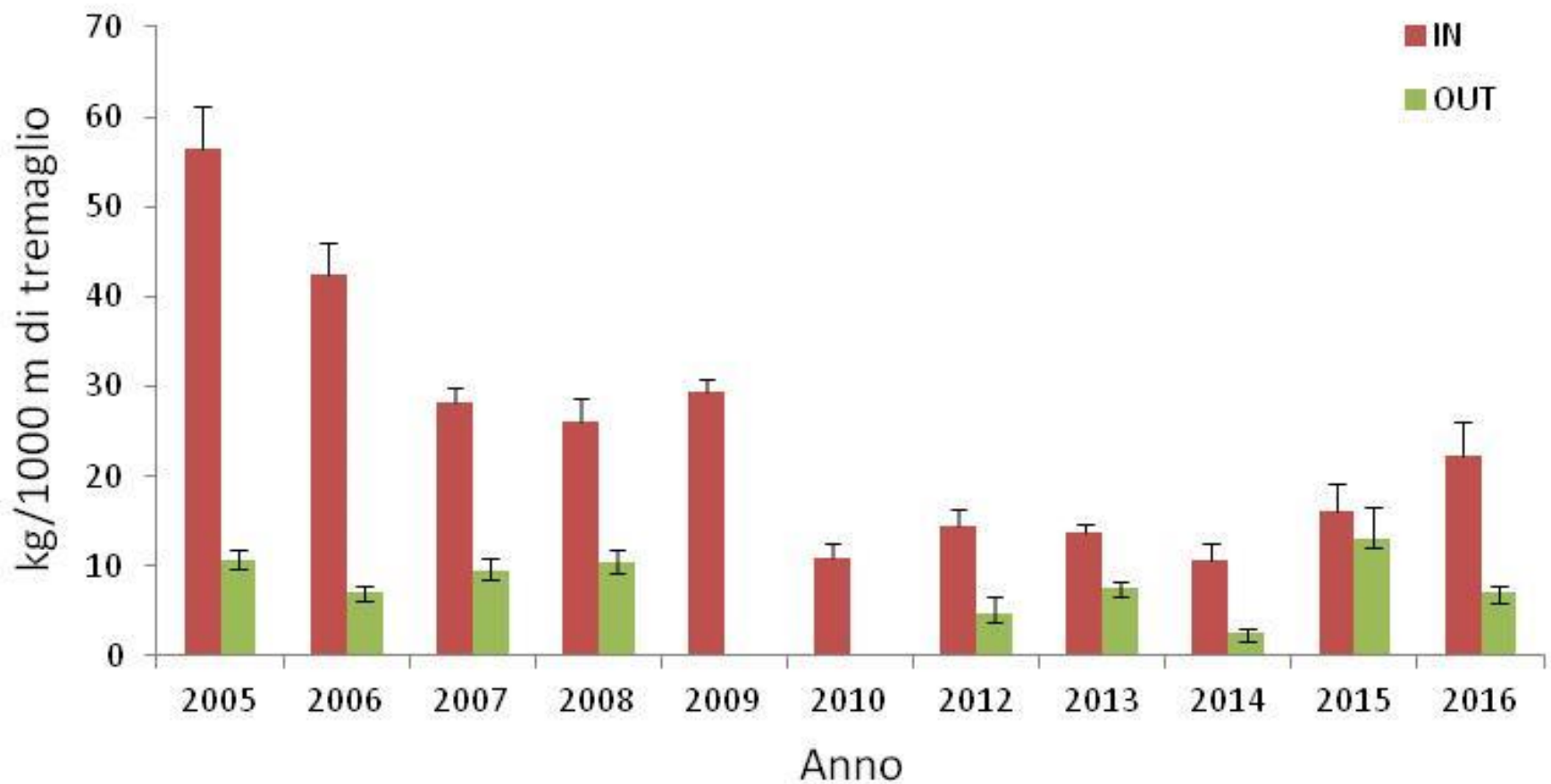
Nets in Zone C
once a week
Allowed net is the
tramaglio (gill
nets) (max 1200 mt
with mesh over 10
(3 cm) and 11 (2,6
cm)

Fishery monitoring

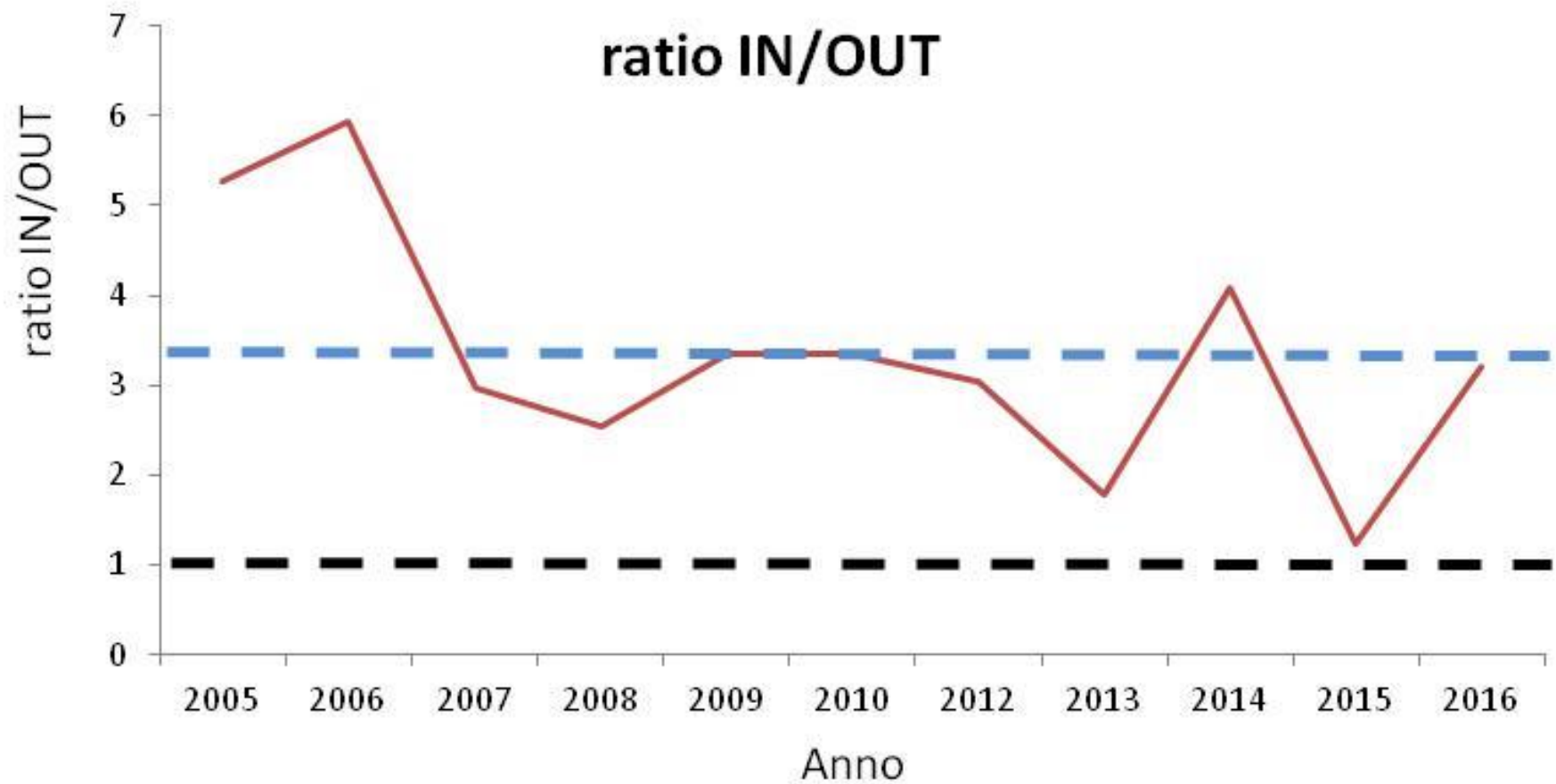
Length and mesh
dimension
species, number,
size (LT) and total
weight for species
Difference with
catching out of
MPA



Fishery performance



Fishery performance



Fishery performance

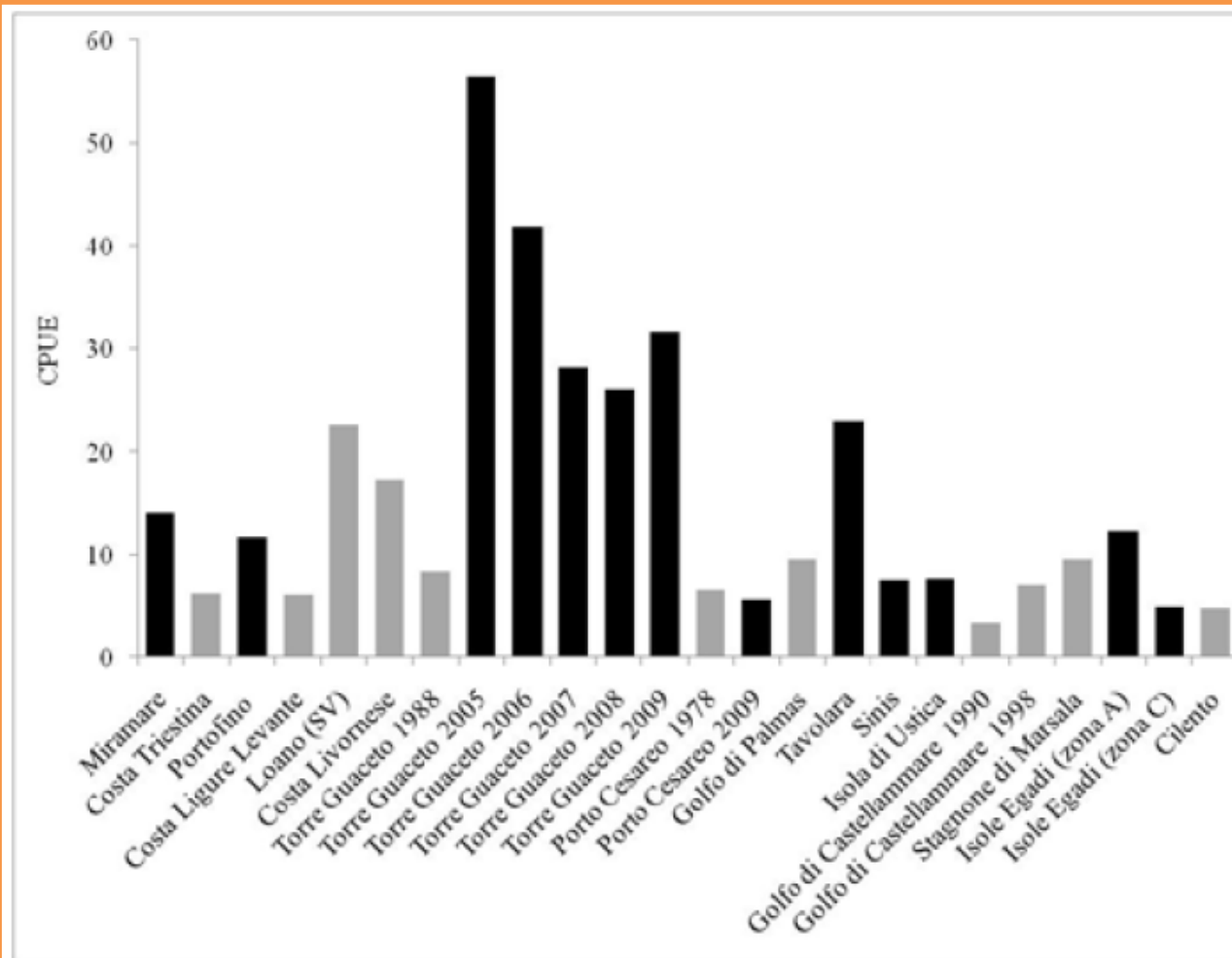
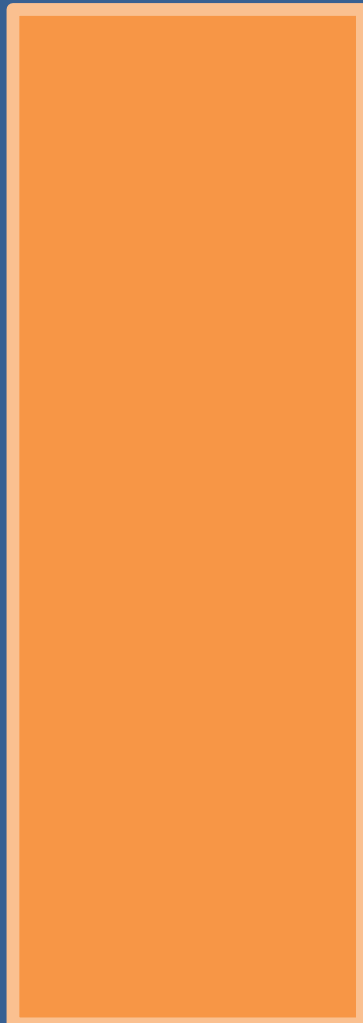


Fig. 1 - Fishing catches (expressed as CPUE: kg/1000m of net/day) of fixed nets (trammels and gillnets) reported in literature along the Italian coasts. Black bars indicate locations within MPAs, grey bars locations not included in MPAs.

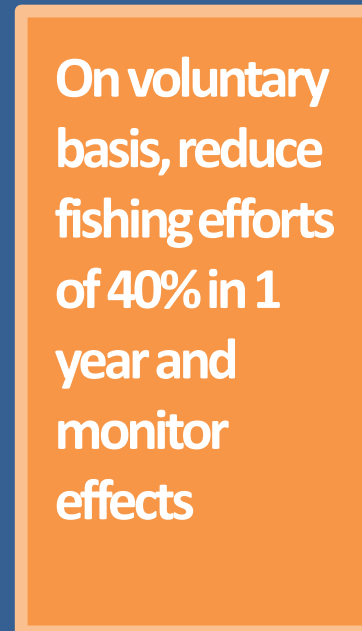
Conservation performance



CATCHES



2015-2016



2017



Guardians of the
SEA

The role of
Fishermen

Environmental
educators



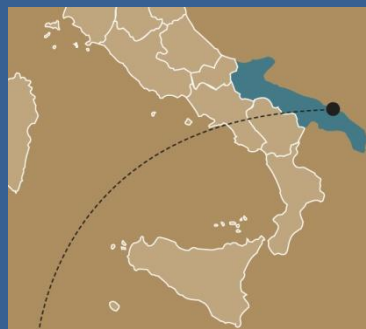
**Conserve and protect the enviromental
heritage**



**The role of
MPA**

**Conserve and protect the cultural heritage of
SSF**

The challenge for the FUTURE



Puglia

Area Marina Protetta di Torre Guaceto,
provincia di Brindisi



Presidio Slow Food®

I **Presidi** sono progetti di Slow Food
nati per tutelare i piccoli produttori e per
salvare i prodotti tradizionali di qualità.

www.fondazioneSlowFood.it

© Marco Marangoni



Slow Food Italia

Piccola pesca di Torre Guaceto



Fondazione Slow Food
per la Sostenibilità



Thanks
for your
attention



<https://www.instagram.com/torreguaceto/>